

Focus Evening Year 9

Wednesday 18 September 2019

sapere aude - dare to be wise

Welcome

Ian Keary

Headteacher



Vision & Values

An intellectually stimulating and outward-facing school, enabling students to flourish and contribute to society.

sapere aude - dare to be wise

Community

Collaboration
Active citizens
Celebrate diversity

Love of Learning

Inspiration
Embrace knowledge
Creative & Critical thinking

Character

Integrity & Respect
Courage & Resilience
Independence & Initiative



Fundraising

Francesca Cataldi

Development Manager



A snapshot of your charitable support



£260,000 total



£61,000 increase



10% increase

giftaid

16% increase



Increase in donations



**Increased number
of work placement opportunities**

Our focus for 2019 - 2020

- ✓ Additional resources for all departments
- ✓ To help funding bids
- ✓ Completion of the Rivermead building – specifically the Performing Arts studio



How you can help

Giving in a tax efficient way:

1) Gift Aid



2) Match funding: for example Aviva, BP, Barclays, Bank of America, Goldman Sachs, ...

development@tiffingirls.org

<https://www.linkedin.com/school/the-tiffin-girls-school>



Pastoral Care

Sarah Finch

Assistant Head



Pastoral Care

- Support, care, advice and guidance
- Monitoring wellbeing and academic progress
- Fostering resilience



Pastoral Team Structure

- Form Tutor
- Head of Year – Miss Mombo and Miss Perkins
- Assistant Headteacher – Pastoral Care/SENCO/DSL
- Deputy Headteacher – Pastoral/Academic

Other pastoral support

- School counsellor – Tunde Bariz
- Health Practitioner – Sarah Chalkley
- Mental Health Clinician – Emma Fredman
- Learning Support Assistant – Rolly Singh
- Pastoral Support administrator – Kathy Entwistle
- Form Associates – Year 12 students



Expectations

- Appropriate behaviour for Learning
- Appropriate school uniform
- Support the school's policy and procedures
- Supervision on the school site
- Pastoral Parent Talks



Behaviour for Learning

- New policy in place
- Rewards: Merit stamps, Merit certificates, postcards, letters, Headteacher awards, celebration assemblies
- Expectations for behaviour around school
- Warnings and sanctions for behaviour:
 - Teacher detention (15 min – break, lunch, after school)
 - HOD/HOY detention (30 min – Wednesday)
 - SLT detention (60 min – Friday)
 - HT detention (120 min – Friday)



Mental Health

- National issue among young people
- We aim to foster a supportive and open atmosphere when discussing mental health
- Mental Health Ambassadors
- Form Associates
- Pastoral Hour programmes focus on mental health
- Assemblies
- Small group or 1:1 support
- Cluster project – NHS trailblazer school



Identifying concerns

Use of data to identify need for pastoral care and support:

- Attendance and punctuality
- Pupil Progress
- Tiffin Learning Attributes
 - Learning in Lessons
 - Learning at Home
 - Organisation Skills



A Word About Sleep....

“Some research showed that if children are sleep-deprived by just an hour a night, it could reduce their cognitive academic performance by up to two whole years”.

“We need to recognise that sleep is one of the most powerful performance-enhancers known to humankind.

“If you are serious about your academic performance, then you should be getting good quality sleep on a regular basis.”



<https://www.theguardian.com/lifeandstyle/2017/mar/04/go-school-two-half-hours-sleep-british-children-arent-sleeping>

Welcome

Gabriella Perkins

Head of Year 9

Religious Studies Teacher



Role of Form Tutor

- The form tutors are vital in providing pastoral care



- The form tutor is the only adult that will see your daughter daily and should be the first person they turn to for advice
- They will monitor behaviour and uniform, as well as attendance and punctuality



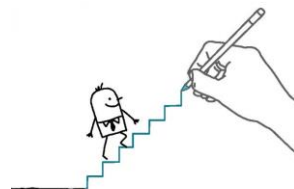
- They are your key point of contact and can be contacted via the planner or email



- They deliver the PSHE programme to their forms alongside form periods



- They monitor progress



Form Time Programme

- 8.30-8.50am daily

Monday	Checking planners and equipment; Reading Scheme
Tuesday	News
Wednesday	Whole School Assembly/ House Assembly
Thursday	Form time Activities
Friday	Year 9 or KS3 assembly



Pastoral Curriculum

Year 9 Overview – Pastoral Hour

Unit 1 – Healthy Lifestyles and Risk taking

Unit 2 – Community in Action

Unit 3 – Economic well-being

Unit 4 – Emotional well-being

Unit 5 – Relationships

Unit 6 – Prevent



Homework

- ARC** (Application, Research & Consolidation)
- Encourage independent study
- Extending school learning



In Year 9, students will be set homework which will take approximately 30 minutes per piece. This will equate to about 1 hour 30 minutes – 2 hours homework a night.

Parents can encourage and monitor homework by:

- Make it clear to your daughter that you value homework
- Providing a reasonably quiet, suitable place for homework
- Support your daughter by setting timings for pieces of work to stop her from over-working
- Expect deadlines to be met and check that they are
- Encourage your daughter by praising her when she has completed her homework
- Sign the student planner once a week



Keeping informed of your daughter's progress

- WebPortal
 - Interim report and End of Year report available on WebPortal
 - Please make use of the WebPortal to report absences. This must be done within 7 days.
 - Attendance and assessment information can be accessed here.
 - Profiles and Interim reports are published here.
- Year 9 Parents' Evening- *Thursday 23 January*
- Headteacher drop-in sessions



Opportunities in Year 9

- **Autumn Term** –Pink day, Art Trip, Music Concerts, Interhouse events, Tiffin alks
- **Spring Term** –Music Trip, School Drama production, Parents' Evening, School Birthday, Music Concerts, Interhouse events, Tiffin alks
- **Summer Term** – TiffinTalks, Art/DT Show, Bronze DofE, Maths Trip, Immersion Day, Battlefields Trip



Key Dates on the Calendar

- 17 December – Autumn Report Issued
- 20 January – Options Evening
- 23 January – Year 9 Parents' evening
- 28 February – GCSE Options Choices Deadline
- 6 - 7 May – Internal exams English, Maths, Science
- 11 May – Assessment week
- 30 June – Summer Report Issued



Year 9 Options Process

- 20 January - Options Evening
- 23 January - Year 9 Parents' evening
- 28 February - GCSE Options Choices Deadline



Keeping in touch

School Planner

Half Termly Newsletter

Parents' Evenings

Focus Evenings

WebPortal

Parent Drop-in Sessions

